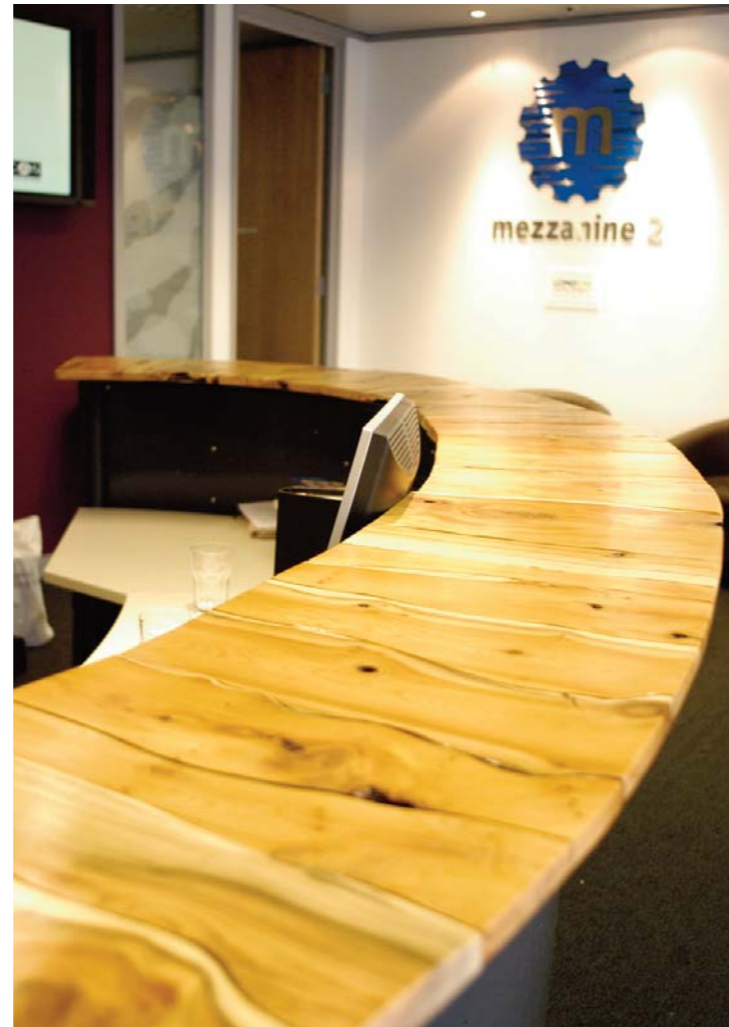




1



2



3

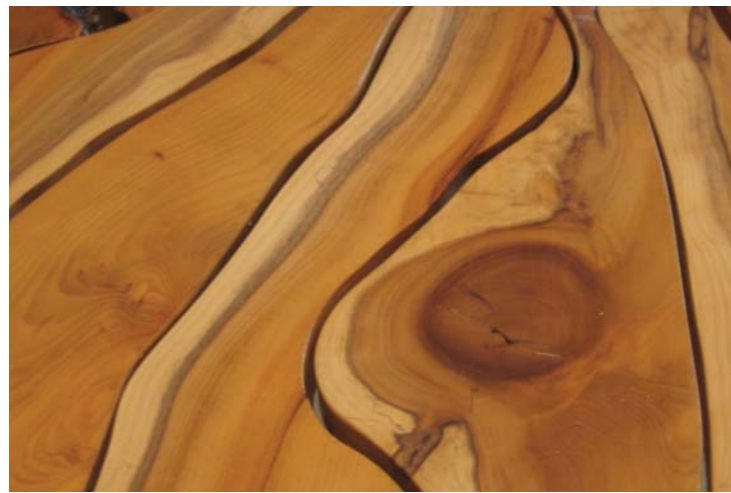
One of the Furniture Group's specialities is working with recycled yew.*

We prefer to work with the natural grain of the wood in order to showcase its beauty.

Other benefits of working with yew are:

- It produces a hard wearing and long lasting surface.
- It permits a range of design possibilities, including curved and linear forms.
- The properties of yew (the heartwood and the sapwood), can display a high contrast in colour not afforded in all timber. This allows us to produce unique, contemporary items of furniture.

**All our yew is sourced from a wood recycling social enterprise based in east London.*



4



5



6



7

1. Boardroom table: Oval 4 metres
2. Reception desk
3. Curved low table.
4. Detail showing the colour contrast possible with yew.
5. Boardroom table: Oval, 3.5 metres
6. Meeting Table: Circular
7. Boardroom table: Rectangular, 4.2 metres